



No Boundaries.™

PPL, PVC, CPVC and SST 316 Bulkhead Fittings

Value-Pak Accessories

Glossary and Key Terms

Bulkhead

Bulkhead fittings are also known as tank adapters, compression fittings, or bulkhead fittings. Standard bulkhead fittings are spin-tighten based, meaning there are no bolts and the fitting pieces screw together to seal against the tank wall. These are made of various materials, and can be used on all plastic tanks in most locations.

Bolted Bulkhead

Bolted Bulkhead fittings serve a similar purpose as standard bulkheads but are configured slightly different. Instead of the fitting spin-tightening, there are bolts and nuts that connect the two pieces. Bolted bulkheads are available in various materials and can be used on all plastic tanks in most locations.

PVC

PVC Polyvinyl Chloride bulkheads and bolted bulkheads can be used in a wide variety of applications. PVC has excellent chemical resistance to most solutions of acids, alkalis and salts, and to other organic compounds miscible with water. PVC is not resistant to aromatic and chlorinated hydrocarbons.. PVC can handle temperatures from 32°F to 140°F.

CPVC

CPVC Chlorinated Polyvinyl Chloride bulkheads can be used in the same way as PVC but CPVC can withstand higher temperatures 32°F to 195°F.

PPL

PPL Polypropylene, the lightest of plastics, bulkheads and bolted bulkheads can be used in a wider variety of applications than PVC. PPL can handle temperatures from -4°F to 195°F.

316 SST

316 Stainless Steel is the strongest of all bulkhead fitting types. 316 SST has a very wide range of chemical resistance and can handle temperatures way beyond that of plastic fittings.

EPDM

EPDM Ethylene Propylene Diene Terpolymer gaskets are designed especially for acids, can handle many aggressive chemicals, alcohol and weathers well over time. EPDM can handle temperatures from -40°F to 195°F.

Viton

Viton, also known as FKM Fluorocarbon Rubbers, gaskets are most chemically resistant, balanced, and have excellent overall properties. Viton is not suitable for caustic chemicals. Viton can handle temperatures from -20°F to 302°F.

PVDF

PVDF Polyvinylidene Fluoride gaskets have superior chemical and abrasion resistance, high mechanical strength, and high dielectric properties. PVDF can handle temperatures from -40°F to 250°F.

X-Link

X-Link, or Cross Link Polyethylene Foam, gaskets have a wide range of chemical resistance; if the tank can handle the chemical, so can Cross Link. Cross Link, once compressed, holds its shape, which can be a cause for leaks if the fitting is removed and put back on the tank at a later time. Cross Link can handle temperatures from 32°F to 140°F.

PTFE

PTFE, Polytetrafluorethylene Teflon, is resistant to most chemicals, is insoluble, chemically inert, non-flammable, dielectric, naturally lubricated and has thermal stability. PTFE can handle temperatures from -40°F to 302°F.

Full Port

Full Port option is available on certain bulkhead fittings. If flow rate is highly important, it is recommended that you choose a bulkhead fitting with Full Port option. Full Port means the fitting size is that size all the way through, with no size reductions internally.

If you are unsure of which fitting material type or gasket is best for you application please feel free to give our sales team a call at 1-800-4-PEABODY.

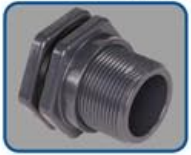
Installation Charges

Installation charges are per fitting.
Bulkheads 1/4"-2": \$80
Bulkheads 3"-6": \$96
Bolted Bulkheads all sizes: \$112

For drop ship orders not all tank bulkhead fittings are available. Drop ship orders from molding plant are \$140 for installation of all available sizes and types of fittings.

Hayward Bulkhead Tank Adapters

PVC Bulkhead Fittings



High quality PVC Fittings come in SxT, TxT, and SxS. Material of bulkhead is PVC with option of EPDM or Viton gasket. PVC is rated for temperatures up to 140°F and can handle a wide range of chemicals.

CPVC Bulkhead Fittings



High quality CPVC Fittings come in SxT, TxT, and SxS. Material of bulkhead is Corzan® CPVC (Chlorinated Polyvinyl Chloride) available only with Viton gasket. CPVC is rated for temperatures up to 195°F and has similar chemical resistances as PVC.

PPL Bulkhead Fittings



High quality PPL Fittings are only available in TxT. Material of bulkhead is PPL with option of EPDM or Viton gasket. PPL is rated for temperatures up to 195°F and can handle a similar range of chemicals as PVC.

SIZE	TYPE	PVC Bulkhead Fittings				Corzan® CPVC Bulkheads				PPL Bulkheads	
		S x T		T x T		S x T		T x T		T x T	
		PART #	LIST	PART #	LIST	PART #	LIST	PART #	LIST	PART #	LIST
1/2"	EPDM	10-3666		10-3667		10-3584		10-3586		10-3587	
	Viton	10-3602		10-3601		10-3541		10-3540		10-3617	
3/4"	EPDM	10-3632		10-3620		10-3581		10-3582		10-3588	
	Viton	10-3605		10-3604		10-3658		10-3543		10-3595	
1"	EPDM	10-3622		10-3623		10-3578		10-3579		10-3589	
	Viton	10-3609		10-3607		10-3655		10-3656		10-3597	
1-1/4"	EPDM	10-3625		10-3626		10-3575		10-3616		10-3591	
	Viton	10-3613		10-3612		10-3651		10-3652		10-3598	
1-1/2"	EPDM	10-3628		10-3629		10-3566		10-3568		10-3743	
	Viton	10-3636		10-3635		10-3592		10-3865		10-3599	
2"	EPDM	10-3631		10-3641		10-3884		10-3885		10-3593	
	Viton	10-3645		10-3638		10-3868		10-3646		10-3608	
3"	EPDM	10-3634		10-3872		10-3881		10-3882		10-3664	
	Viton	10-3649		10-3648		10-3640		10-3643		10-3611	
4"	EPDM	10-3870		10-3869		10-3576		10-3879		10-3596	
	Viton	10-3659		10-3657		10-3876		10-3875		10-3614	
6"	EPDM	10-3619		10-3630		10-3618		10-3663		10-3590	
	Viton	10-3662		10-3661		10-3864		10-3878		10-3594	

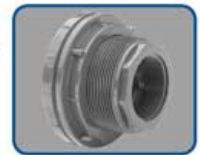
S x S Connections are available for PVC and CPVC Bulkhead Fittings at *S x T* pricing

Specialty and Small Bulkheads



Norwesco 316 SST Bulkhead Fitting
Cost effective Norwesco 316 SST Bulkhead. Available with EPDM and Viton gaskets. Available as TxT.

Spears PVC Small Bulkhead Fitting
Spears PVC bulkhead fittings are available in smaller sizes for required applications. Available as TxT.



TYPE	Norwesco		Spears Bulkhead Fittings			
	2" 316 SST Bulkhead PART #	LIST	1/4" PVC Bulkhead PART #	LIST	3/8" PVC Bulkhead PART #	LIST
EPDM	02-29261		02-29268		02-29270	
Viton	02-29262		02-29269		02-29271	

Self-Aligning Bulkhead Fittings



Norwesco PPL Self-Aligning Bulkhead
Cost effective Norwesco self-aligning bulkhead. Available with EPDM or Viton. Double threaded and designed to be installed on dome of tank for straight piping connections. Available as TxT only.



Hayward PVC Self-Aligning Bulkhead
High quality PVC self-aligning bulkhead. Allows for straight piping connections on the tops of domed tanks or other curved surfaces. Swivel ball connection corrects for the arced surface; no additional fittings or piping required.

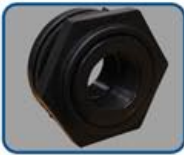
TYPE	Norwesco PPL		Hayward PVC Self-Aligning Bulkheads (TxT)					
	2" PPL Self-Aligning PART #	LIST	1" PART #	LIST	2" PART #	LIST	3" PART #	LIST
EPDM	02-28283		02-15009		02-15008		02-15007	
Viton	02-29263		02-29273		02-29274		02-29275	

Norwesco and Banjo Tank Adapters

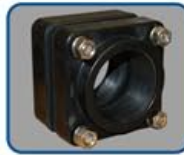
PPL and HD-PPL Bulkheads

316 SST and PPL Bolted Style Bulkheads

Banjo 316 SST Bulkhead



Cost effective Norwesco PPL Bulkhead available with EPDM and Viton only. Available in HD (Heavy Duty) for more demanding needs.



Cost effective Norwesco Bolted Bulkhead available with EPDM and Viton (Cross-link PE for 316 SST style only). PPL Bolted has 316 SST bolts.



High quality Banjo available with EPDM and Viton only. Made of 316 SST material. Full Port options available.

Norwesco Bulkhead Adapters and Fittings (T x T)										Banjo Bulkhead (T x T)		
SIZE	TYPE	PPL Bulkhead		HD PPL Bulkhead		316 SST Bolted		PPL Bolted		316 SST Bulkhead		
		PART #	LIST	PART #	LIST	PART #	LIST	PART #	LIST	PART #	LIST	
3/8"	EPDM									02-25955		
	Viton									02-28871		
	X-Link											
1/2"	EPDM			02-24		02-28295	CALL FOR ALEPBOIDY			02-25956		
	Viton			02-28284		02-28302				02-28873		
	X-Link					02-28309						
3/4"	EPDM	02-85		02-23		02-28296			02-13		02-14952	
	Viton	02-28285		02-28286		02-28303			02-29256		02-28875	
	X-Link					02-28310						
1"	EPDM	02-12				02-28297			02-14		02-14951	
	Viton	02-28287				02-28304			02-29257		02-28876	
	X-Link					02-28311						
1-1/4"	EPDM	02-10				02-28298					02-14950	
	Viton	02-28288				02-28305				02-28877		
	X-Link					02-28312						
1-1/2"	EPDM	02-4				02-28299		02-15		02-14949		
	Viton	02-28289				02-28306		02-29258		02-28878		
	X-Link					02-28313						
2"	EPDM	02-11		02-28775		02-28300		02-16		02-14948*		
	Viton	02-28290		02-28291		02-28307		02-29259		02-28874*		
	X-Link					02-28314						
3"	EPDM	02-20				02-28301		02-21		02-14946		
	Viton	02-28292				02-28308		02-29260		02-28880		
	X-Link					02-28315						
4"	EPDM	02-19										
	Viton	02-28293										
	X-Link					02-28316						

* Available with FP (Full Port) option. Call for assistance.

Banjo Bottom Drain Bolted Tank Fitting



Polypropylene Bottom Drain Bolted Tank Fitting is ideal for cone bottom tanks. This fitting is designed with a raised inner mounting area to allow for total drainage of tank. Four gasketed, raised brackets attach the fitting to the tank, creating an inner gap to allow liquid to drain out. Prevents liquids from building up around the fitting and reduces chances of corrosive liquid from pooling and slowly deteriorating tank. 316 SST bolts are sealed into fitting's head.

Banjo PPL Bottom Drain Bolted Bulkhead (TxT)								
TYPE	3/4" x 1"		1" x 1"		1-1/4" x 1"		1-1/2" x 2"	
	PART #	LIST	PART #	LIST	PART #	LIST	PART #	LIST
EPDM	02-51		02-14927		02-14925		02-14923	
Viton	02-52		02-14926		02-14924		02-14922	
TYPE	2" x 2"		2" x 2"*		3" x 3"			
	PART #	LIST	PART #	LIST	PART #	LIST		
EPDM	02-14921		02-14919		02-14917			
Viton	02-14920		02-14918		02-14916			

* Fitting available with FP (Full Port) option.

Con-Tech Deluxe Bolted Fittings



Con-Tech Deluxe 316 SST Bulkhead Fittings come as TxT only. Built out of 316 Stainless Steel material with two gaskets. The internal gasket is blind drilled, and the external flange has through holes for a tight seal on tank wall.

Contech Bolted Fitting Type 316 SST (T x T)

TYPE	1/2"		3/4"		1"		1 1/2"	
	PART #	LIST	PART #	LIST	PART #	LIST	PART #	LIST
EPDM	02-15046		02-15045		02-15044		02-15043	
Viton	02-15039		02-15038		02-15037		02-15036	
Teflon	02-28671		02-28672		02-28673		02-28674	

TYPE	2"		3"		4"	
	PART #	LIST	PART #	LIST	PART #	LIST
EPDM	02-15042		02-15041		02-15040	
Viton	02-15035		02-15034		02-15033	
Teflon	02-28675		02-28676		02-28677	

Micromold Bulkhead Fittings



Micromold Bulkhead Fittings are made of Microflorin, a special virgin Teflon, and are unique in that they don't have gaskets. Fittings are supplied with special Teflon® encapsulated O-Rings which seal to the interior tank wall. Special silicone hollow-core O-Ring provides sealing flexibility, and also compensates for any creep relaxation which may occur in the fitting body.

Micromold PTFE Bulkhead Fittings (T x T)

TYPE	1/8"		1/4"		3/8"		1/2"	
	PART #	LIST	PART #	LIST	PART #	LIST	PART #	LIST
PVDF					02-61		02-62	
Teflon	02-15058		02-15057		02-15056		02-15055	

TYPE	3/4"		1"		1 1/4"		1 1/2"	
	PART #	LIST	PART #	LIST	PART #	LIST	PART #	LIST
PVDF	02-63		02-64		02-65		02-66	
Teflon	02-15054		02-15053		02-15052		02-15051	

TYPE	2"		3"		4"	
	PART #	LIST	PART #	LIST	PART #	LIST
PVDF	02-67					
Teflon	02-15050		02-15048		02-15047	

PLEASE CALL FOR PRICING

For more Value-Paks and Value-Pak Accessories, please visit www.etanks.com/pamphlets
 For more information please email us at sales@etanks.com or
 call us at 1-800-4-PEABODY

13435 Estelle Street Corona, CA 92879

www.etanks.com

ph: 951-734-7711 | fx: 951-734-4111

sales@etanks.com

