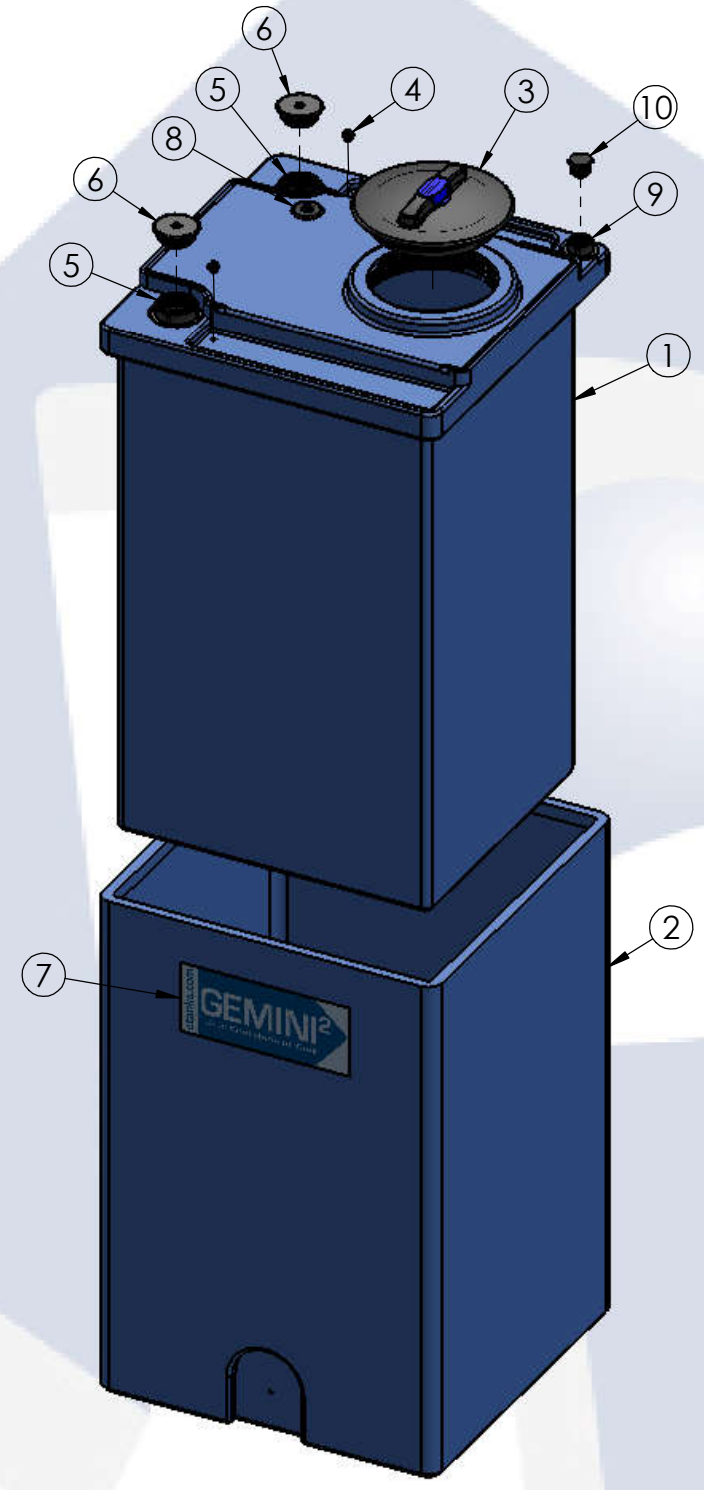


70 GALLON GEMINI ²	PART NUMBER	
	BLUE	NATURAL
STANDARD (1.5 SPG)	01-29824	01-29828
HD (1.9 SPG)	01-30068	01-30072



**ISO VIEW
ASSEMBLED**



**TRIMETRIC VIEW
EXPLODED**

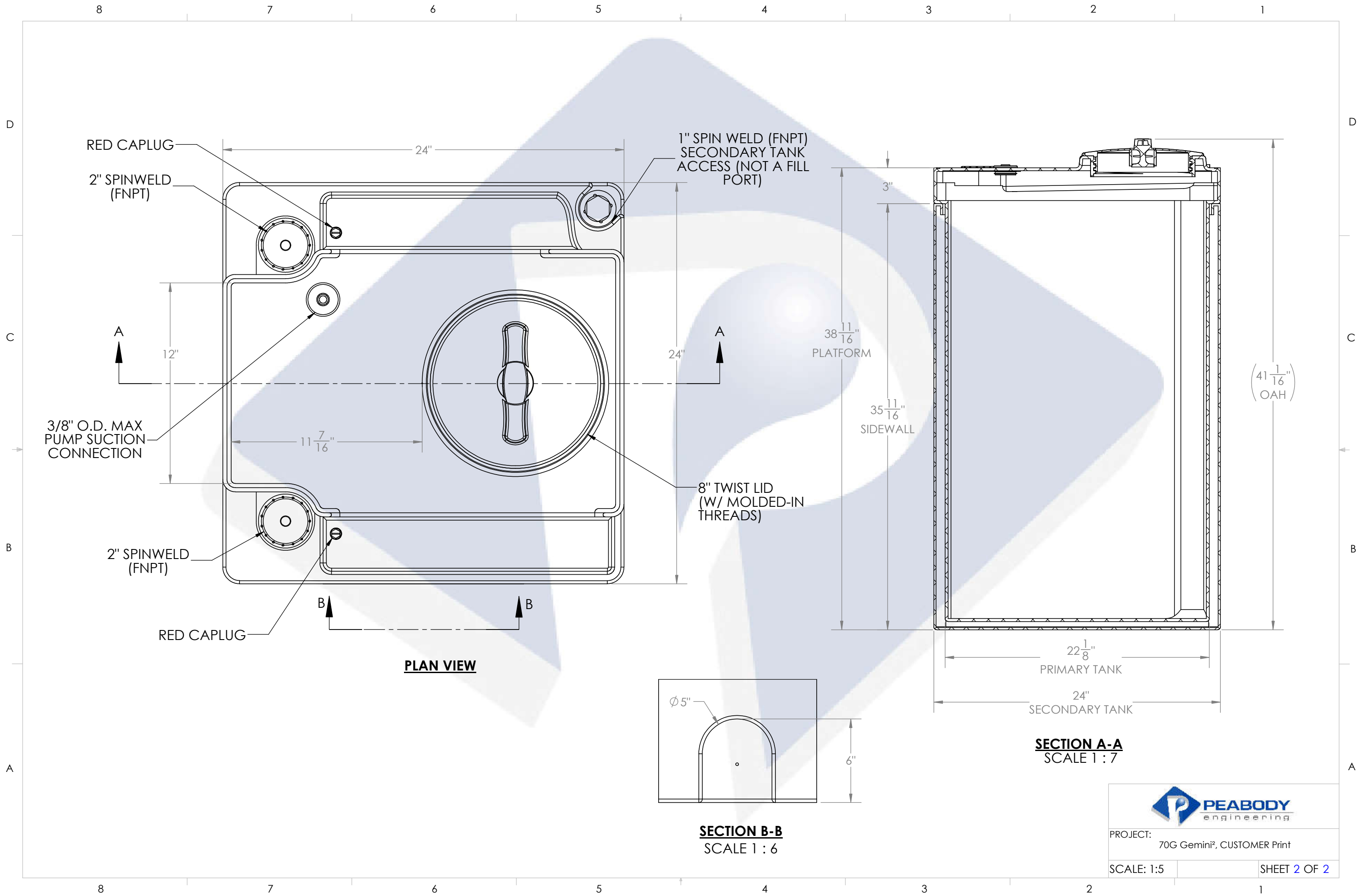
ALTERNATE CONFIGURATION TO MEET NSF/ANSI STANDARD 61 AVAILABLE

TOP LEVEL ASSEMBLY		
ITEM NO.	DESCRIPTION	QTY.
1	GEMINI ² , 70G INNER TANK	1
2	GEMINI ² , 70G OUTER TANK	1
3	Ø8" TWIST LID ASSEMBLY	1
4	RED CAPLUG / O-RING SUB-ASSY	2
5	2" FNPT SPIN WELD FITTING, PE, BLACK	2
6	2" MPT PLUG, PE, BLACK	2
7	GEMINI ² MOLD IN LOGO	1
8	2" CAPLUG/GROMMET ASSEMBLY	1
9	1" FNPT SPIN WELD FITTING, PE, BLACK	1
10	1" MPT PLUG, PE, BLACK	1

- NOTES:**
- CAPACITY: 70 GAL. NOMINAL
 - APPROXIMATE WEIGHT: 63 LBS
 - TANK MATERIAL: LLDPE W/ UV INHIBITOR
 - SERVICE PRESSURE: ATMOSPHERIC

PROPRIETARY AND CONFIDENTIAL
THE INFORMATION CONTAINED IN THIS DRAWING IS THE SOLE PROPERTY OF PEABODY ENGINEERING. ANY REPRODUCTION IN PART OR AS A WHOLE WITHOUT THE WRITTEN PERMISSION OF PEABODY ENGINEERING IS PROHIBITED.

UNLESS OTHERWISE SPECIFIED:		NAME	DATE	
DIMENSIONS ARE IN INCHES TOLERANCES: ±1/4" ANGULAR: ±.5° ONE PLACE DECIMAL: ±.25 TWO PLACE DECIMAL: ±.125 THREE PLACE DECIMAL: ±.063		DRAWN	RFR 11/02/16	
TANK MATERIAL: LLDPE	INNER TANK S/N:	CHECKED	ENG APPR.	PROJECT: GEMINI ² DUAL CONTAINMENT TANKS
OUTER TANK S/N:	CUSTOMER PO#	ENG APPR.	MFG APPR.	CUSTOMER: PEABODY STANDARD
DO NOT SCALE DRAWING		Q.A.	SITE/LOCATION: -	
ALTERNATIVE VERSIONS		DRAWING#: SEE TABLE		
MATERIALS: XLPE, PPL, PVDF COLORS: NATURAL, BLUE OR BLACK AVAILABLE WITH FRP WRAP		SIZE		DESC. 70 GALLON GEMINI ² TANK, 24" x 24" x 41"
CALL FOR PART NUMBERS		SCALE: 1:12		REV. G
			SHEET 1 OF 2	



PROJECT: 70G Gemini², CUSTOMER Print

SCALE: 1:5

SHEET 2 OF 2